



Only if!
Security
was as Simple...

Since 1978
Manufacturing
High-Tech Electronic Equipments

Export to more than 60 Countries



ThruScan[®]
METAL DETECTORS



*Yesterday, today,
tomorrow..
Always with you!..*

ELEKTRAL A.Ş was founded by Mr. Sayil Dincsoy (M.Sc.) in 1978 and presently continues accelerated high technology production in its 20.000 m² integrated facilities.

*ELEKTRAL has 2 main activities of production comprised of **Security Metal Detectors and Vending Machines.***

ELEKTRAL has Automatic Conveyor Bands, Metal and Plastic foaming stations ,High Quality Machinery (Fiber Laser Cutter, Robot Welding, CNC Punch. . .), R&D Engineering Team, IT Team for software programming, PCB design team and Total Quality Management.

ELEKTRAL also cooperates with Asian, Far-Eastern- German, Italian, US and various European companies for co-production, OEM, ODM and international representation. With our OEM production our products are being distributed Worldwide by well reputed European distributors under their brand name and have been gaining recognition in various competitive platforms.

ELEKTRAL is one of 3-4 Major WTMD manufacturers that can produce the most advanced Walk Through Metal Detectors and has achieved a number of awards:

ELEKTRAL A.S. has been awarded the "No:1 Company of the shining Stars of the Turkish Export Community" for its Metal Detector Exports Worldwide. It has been awarded by IAOSB (Izmir Ataturk Industrial Zone) as No:1 Innovation Trophy.

ThruScan® Metal Detectors" have been announced "The Best Deal" at the leading Middle East Security Exhibition INTERSEC in Dubai-UAE. ThruScan® Metal Detectors has gained a very good Worldwide Reputation and Impressive References with its high quality and up to date technical features. Our production is in Conformity with NILECJ0601 American Standards, ECAC (European Civil Aviation Conference) Doc 30 latest standards, Complies with CE Norms and strictly follows ISO 9001:2008 QMS procedures

ThruScan® sX-i model has successfully passed ECAC tests and is a WTMD which carries out its tasks smoothly in many airports throughout the World. The product is strides ahead of competitors in Price/Performance.

The level of sensitivity in the ThruScan® dX-X HHMD has not been achieved in any other hand-held metal detector in the World.

ThruScan Metal detectors are being produced to be competitive not only with the leading companies of the EU and US but even with the Far East origin models.

Some of the references of ThruScan® are provided below.

Formula 1, University Olympics 2011, Moto GP, Turkish Naval Forces, Egyptian Banks, Various British Consulates, Japanese Consulates, Turkish, Russian and Bulgarian Consulates, Prime Ministries of Turkey, India, Singapore and Bulgaria, Ministry of Home Affairs of Bulgaria, Jailhouses in Israel, Poland, UAE and Macedonia, Airport authority of Frankfurt, Queen Alia-Jordan, Karachi-Pakistan, Erbil-Iraq, Vienna, India, Taiwan, Bangladesh, Turkish Prime Ministry Intelligence Service, .Turkish Presidential Residence, Pakistan and Moldova Presidential Residences, Ministry of Industry, Ministry of Defense and various Military Bases in Turkey.Court houses and Jailhouses in Germany.

ELEKTRAL A.S contributes to the International Security & Defense sector with intensive R&D activities and Walk-Through & Hand-Held Metal Detector production for sustainable growth.

We are dedicated to manufacturing top quality high-tech products ahead of the global competition.





Established in 1978, Elektral has over 50.000 equipments guarding high security locations Worldwide.

We focus on production of High Quality environment friendly products with a dedicated R&D team and believe that our products contribute to a more safe and peaceful World.

Superior and advanced features make our products stand out in the Global Competition.

ThruScan® Metal Detectors are in compliance with E.C.A.C Norms and can detect Small Test Pieces according to NIJ 0601-02. (United States Department of Justice)

We export to World Famous European Suppliers of Security Metal Detectors. Some of our equipments are being distributed Worldwide and also carry the "Made in Germany", "Made in UK" etc. Labels among other labels of international repute.

All ThruScan® Metal detectors are being produced with Elektral's - indigenously researched and developed technology / features.

ThruScan® Metal Detectors have all necessary Certifications and are in Compliance with E.C.A.C., EMC/EMI EN 61000-6-3, EN 61000-6-2, EN 61010 and 60950 and ISO 9001:2008 Certificates.

ThruScan® Walk-Through Metal Detectors use VLF (Very Low Frequency) Technology which is harmless to human health, pregnant women and pace maker users.

ThruScan® Metal Detectors are being offered under 2 years Warranty and 10 Years Parts Supply Availability as per our "General Conditions of Sales, Delivery & Warranty"

Real-Time Video Prosecution Unit embedded with Walk-Through Metal Detectors the very first time.

ThruScan® Metal Detectors are being exported to more than 60 countries. ThruScan® Metal Detectors have the Built-in UPS Feature enabling continuous operation against electricity cut offs.

246 adjustable sensitivity steps with "Jailhouse Sensitivity" Mode for ultra high sensitivity.

ThruScan® WTMDs can detect even half cutter blade.

ELEKTRAL A.S. provides OEM Supplies to World famous AQAP 4 Certified (DVE, MIL STD 810 E) Companies.

Why ThruScan?

ELEKTRAL A.S. R&D projects are being supported by TUBITAK (Turkish Scientific Research Council).

We provide excellent After Sales Service and Customer Support.

Various Multi-zone Walk-Through Metal Detectors with 3/6/9/15 Zones.

ThruScan® Metal Detectors can perform even under extreme operating conditions -20 °C - + 70 °C, 95% Non Condensed Humidity.

Available Remote Control optional IRDA (Pilot) Remote Control and SCADA Software using RS 232, RS 422 or RS 485) via a remote PC enabling Real Time Monitoring, Settings Change and keep Statistical data on your hard disc using the Data Logger Module.

All settings can be easily done by Graphic LCD of WTMD. One of the most easy-to-use detectors in the World.

ThruScan® WTMDs have extra immunity against environmental magnetic noise.

Bi-Color LED Traffic Control indication (Green-Pass, Red-Wait) enabling high throughput rate of approx 60 persons/minute.

ThruScan® Metal Detectors may operate between 70-260 V AC, making it usable across international standarts and diverse locations.

ThruScan® Walk-Through Metal Detectors are equipped with 5 Digit Counter for In/Out Counters (Visible/Invisible), Alarms are counted separately and Statistical data can be saved.

All ThruScan® WTMDs come with a Relay Output as a Standard Feature to enable integration with ThruScan Products or with other Electronic Security Systems (activation of CCTV, Turnstiles etc. at alarm)

You can easily reload factory default settings from the menu and use your equipment like the very first run.

Quality
Economy
After Sales Service





Product Code s3: 869755498115
 Product Code s6: 869755498116
 NATO STOCK NO (NSN): 6350KK0196503

Technical Features:

- Weight: 49 kg
- Gross weight: 61 kg
- Ambient Temperature: -20°C to +70°C
- Operating voltage: 70 VAC – 270VAC / 50Hz - 60Hz
- Power: 10W Stand By- 20W (Alarm)
- Net Passage: 740x580x2000
- External: 850x580x2200 mm
- Package Dimensions (W x H x L):**
- Box 1: 650 x 265 x 2285 mm (51 kg)
- Box 2: 240 x 260 x 800 mm (10 kg)

features...

- Conforms with European Norms NILECJ-0601.00 L1-5 Standard and produced under ISO 9001: 2008 QMS
- Electromagnetic Field-EMC conforms with International Health and Safety Norms
- Capable to Detect both Ferrous and Non-Ferrous Metallic Threat Objects Considered Dangerous by International Security Authorities.
- Can detect when tested both individually and in combination.
- Gives Alarm to all threat objects detected in different Alarm Zones.
- Detects all threat objects even those hidden with camouflage, concealed and/or wrapped. Impossible for such threat objects to pass through the WTMD without causing an alarm.
- No Interferences between Zones and No False Alarms
- ThruScan/s3 Multi-Zone - 3 Vertical Detection Zones (Left/Middle/Right)
- ThruScan/s6 Multi-Zone - 6 Matrix Detection Zones (Up/Middle/Down and Left/Right)
- Homogeneous Magnetic Field – No Dead Points – Same Detection Capability from bottom to top
- 10 sensitivity levels, 246 adjustable sensitivity steps at each + 1 standard preset international security program
- Auto Calibration (Automatically calibrates itself to Environmental Conditions) No Set Up Changes necessary when relocated and/or new Magnetic Objects brought Near-By
- Human Health friendly Very Low Frequency VLF technology, No affects to Pace Makers, Pregnant and Magnetic Media
- Green/Red traffic control LEDs allow to enter 30 Persons / Min.
- Superior Discrimination, Precise target location identification / Graphic zone display on Control Unit
- Metal Density-Mass, Signal Strength Display at 10-level-VU meter with green, yellow, red LEDs easily allows sight from distance
- Digital Environment magnetic noise level and visual detection and Error Code Display on Wide 4x20 Characters LCD Screen
- Adjustable audio alarm at 10 tons/level or Soundless (Mute) operation.
- Five Digit Incoming Counter (Visible/Invisible)
- Alarm Counter (Five Digit)
- IR Pass Sensor On / Off selection
- Four-digit changeable digital Pin Code
- Automatic Failure Display with Continuous Self-Checking of Key Parameters. (BITE – Built-in Test Equipment)
- Reloading the factory default settings by one-touch button
- Easy programming and monitoring with wide LCD display
- 4 Menu Languages, Standard menu in English, German, Spanish and Turkish
- Relay output for recording CCTV, Photo Recording, controlling turnstiles, etc. on Alarms
- OPTIONAL -Uninterruptible Power Supply (UPS) enabling 2 hours operation without mains
- No seasonal adjustment requirement thanks to its Digital Electronic System (DSP)
- Easy-to-mount and assemble walk through metal detector (15 Minutes) Male/Female Socket-Connector Design
- IP 20 Protection Level (EN 60529)
- Manufactured for 7/24 Continuous Operation
- 74 cm Net Passage Width and 200 cm Net Passage Height
- Interference free Operation at Middle Level Sensitivity of 10 cm Distance Constant Metals and 200 cm distance Moving Metallic Objects
- Audio-Visual alarms are noticeable at a range of 2 meters•
- Micro-Processor Settings do not change when there is an electricity cut-off
- Corrosion Resistant Metal Footers for sturdy placement and durable use.
- In conformity to CE , Certified in Compliance to EN 61000-6-3, EN 61000-6-1 regulations and in compliance with DIRECTIVE 2002/95/EC (restriction of the use of certain hazardous substances in electrical and electronic equipment)

Very Economical Models...

ECAC COMPLIANCE
 Detects all threat objects described in ECAC Doc.30 (European Civil Aviation Conference)

CERTIFIED SAFE
 IEEE C95.6-2002 Human Exposure to Electromagnetic Fields



Product Code: 869755498111
NATO STOCK NO (NSN): 6350KK0158818

Technical Features:

- Weight: 51 kg
- Gross Weight: 63 kg
- Ambient Temperature: -20°C to +70°
- Operating voltage: 70VAC – 270VAC / 50Hz - 60Hz
- Power: 10W Stand By- 20W (Alarm)
- Net Passage: 740x580x2000
- External: 850x580x2200 mm
- Package Dimensions (W x H x L):**
- Box 1: 650 x 265 x 2285 mm (52 kg)
- Box 2: 240 x 260 x 800 mm (11 kg)

features...

- International norms (NILECJ-0601 L1-5/IP44/EN60950 Class1) In conformity with CE European Union Norms and produced under ISO 9001: 2008 QMS
- Certified in Compliance to EN 61000-6-3, EN 61000-6-1 regulations and in compliance with DIRECTIVE 2002/95/EC (restriction of the use of certain hazardous substances in electrical and electronic equipment)
- Multi-Zone - 9 Real Matrix Detection Zones(Up/Middle/Down and Left/Middle/Right)
- Whilst Normal Operation, displays IN/OUT Counters and Security Level on LCD without abbreviations so that Security Staff can easily understand
- Capable to Detect both Ferrous and Non-Ferrous Metallic Threat Objects Considered Dangerous by International Security Authorities.
- Can detect test objects both individually and in combination.
- Displays the Detected Metal Objects location on Both Side Panels LEFT/RIGHT from bottom to top with Continuous LED Zone Indicators
- Detects all threat objects even concealed, hidden with camouflage and/or wrapped. Impossible for such threat objects to pass through the WTMD without causing an alarm.
- No Interferences between Zones and No False Alarms
- Homogeneous Magnetic Field – No Dead Points – Same Detection Capability from bottom to top
- Detects Metals regardless their orientation
- 10 sensitivity levels, 246 adjustable sensitivity steps at each + 1 Standard preset International Security Program
- Metal Density-Mass, Signal Strength Display at 10-level-VU meter with green, yellow, red LEDs easily allows sight from distance
- Superior Discrimination, Pin Point target location identification with Graphical zone display on Control Unit
- Auto Calibration (Automatically calibrates itself up to Environmental Conditions) No Set Up Changes necessary when relocated and/or new Magnetic Objects brought Near-By
- Human Health friendly Very Low Frequency VLF technology, No affects to Pace Makers, Pregnant and Magnetic Media
- Green/Red bicolor traffic through LEDs easily allows sight from distance 60 Persons/Minute and LED Alarm Indicators on side panels
- Operation Mode, Programming Parameters and Error Codes are Displayed on Wide 4x20 Characters LCD Screen
- Visual display of magnetic interference from environment
- 10 Adjustable audio tones with 10 volume levels (enabling

Mute Operation)

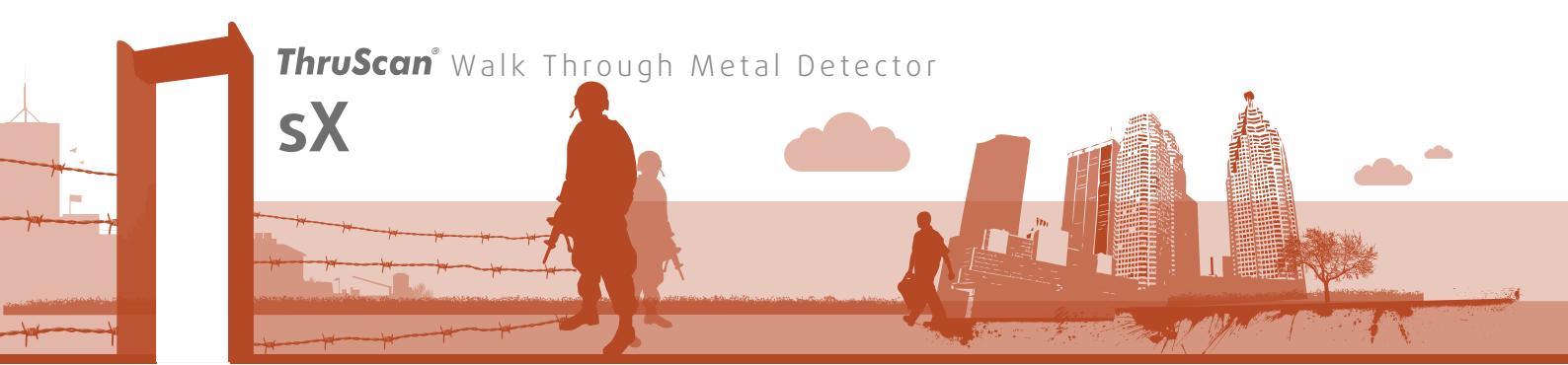
- IP 44 Protection Level (EN 60529)
- Five Digit Incoming/ Outgoing traffic counter (can be made invisible)
- Alarms counted separately
- Interference free Operation from other Electronic Devices and Does Not affect other Electronic Equipments. Necessary filtering precautions have been taken.
- Four-digit changeable digital Pin Code + Mechanical Lock
- Automatic Failure Display Function with continuous self checking of key parameters (BITE - Built In test Equipment)
- Reloading the factory default settings by one-touch button
- Easy Programming and Display via High Resolution LCD (Liquid Crystal Display)
- 4 Menu Languages, Standard menu in English, German, Spanish and Turkish
- Relay output for recording CCTV, Photo Taken-Recording, controlling turnstiles, etc. on Alarms
- STANDARD Built-in Uninterruptible Power Supply (UPS) enabling 2 hours operation without mains
- No seasonal adjustment requirement thanks to its Digital Electronic System (DSP)
- Easy-to-mount and assemble walk through metal detector (15 Minutes) Male/Female Socket-Connector Design
- Manufactured for 7/24 Continuous Operation
- 74 cm Net Passage Width and 200 cm Net Passage Height
- Interference free Operation at Middle Level Sensitivity of 10 cm Distance Constant Metals and 150 cm distance Moving Metallic Objects
- Audio-Visual alarms are noticeable at a range of 4 meters
- Micro-Processor Settings do not change when there is an electricity cut-off
- No interference with Storage Media, Flash Memories, CD, Diskettes and other electronic devices
- All Electronic Units (electronic unit, power supply, battery, adapter etc..) are inside the Equipment. No external units.
- Corrosion Resistant Metal Footers for sturdy placement and durable use.
- Resistant to Vibration & Impact
- Optional -SCADA Software-Controlled remote data communication and Networking of Multiple Metal Detectors; Software to Change settings by PC (Digital output for Network Connection)
- Manufactured using the latest technology and advanced components

Being used at Jailhouses and Court Houses in Germany by the Ministry of Justice, Germany

ECAC
COMPLIANCE
Detects all threat objects described in ECAC Doc.30 (European Civil Aviation Conference)

CERTIFIED SAFE
IEEE C95.6-2002
Human Exposure to Electromagnetic Fields

ThruScan® Walk Through Metal Detector sX



NILECJ

CE

ISO

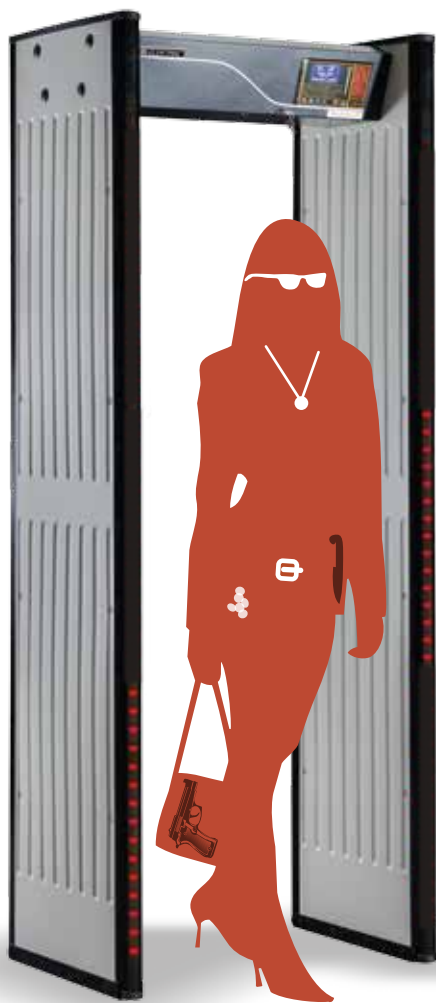
EMC

AEEE

features...

- International norms (NILECJ-0601 L1-5/IP44/EN60950 Class1) In conformity with CE European Union Norms and produced under ISO 9001: 2008 QMS
- Certified in Compliance to EN 61000-6-3, EN 61000-6-1 regulations and in compliance with DIRECTIVE 2002/95/EC (restriction of the use of certain hazardous substances in electrical and electronic equipment)
- Multi-Zone - 9 Real Matrix Detection Zones(Up/Middle/Down and Left/Middle/Right)
- Separate Sensitivity Settings for Different Detection Zones
- Whilst Normal Operation, displays IN/OUT Counters and Security Level on LCD without abbreviations so that Security Staff can easily understand
- Capable to Detect both Ferrous and Non-Ferrous Metallic Threat Objects Considered Dangerous by International Security Authorities. Can detect when tested both individually and in combination.
- Displays Location of the Detected Metal Objects with Continuous LED Zone Indicators on Both Side Panels from top to bottom
- Detects all threat objects even concealed, hidden with camouflage and/or wrapped. Impossible for such threat objects to pass through the WTMD without causing an alarm.
- No Interferences between Zones and No False Alarms
- Homogeneous Magnetic Field – No Dead Points – Same Detection Capability from bottom to top
- Detects Metals regardless their orientation
- 20 sensitivity levels, 246 adjustable sensitivity steps at each, Preset NILECJ Sensitivity Program, - 7 Preset Programs
- Automatic Frequency Selection Feature
- Metal Density-Mass, Signal Strength Display at 10-level-VU meter with green, yellow, red LEDs easily allows sight from distance
- Superior Discrimination, Pin Point target location identification with Graphical zone display on Control Unit
- Auto Calibration (Automatically calibrates itself up to Environmental Conditions) No Set Up Changes necessary when relocated and/or new Magnetic Objects brought Near-By
- Human Health friendly Very Low Frequency VLF technology, No affects to Pace Makers, Pregnant and Magnetic Media
- Green/Red bicolor traffic through LEDs easily allows sight from distance 60 Persons/Minute and LED Alarm Indicators on side panels
- Operation Mode, Programming Parameters and Error Codes are Displayed on Wide 64x128 Characters GLCD Screen
- Real Time Environmental Magnetic Noise Level Display
- 10 Adjustable audio tones with 10 volume levels (enabling Mute Operation) Adjustable Alarm Duration
- IR Protection Feature enabling perfect low false alarm operation/ Continuous Detection Mode Selection Enabled
- IP 44 Protection Level (EN 60529)

- Five Digit Incoming/ Outgoing & Alarm Counters (Visible/In-visible)
- Interference free Operation from other Electronic Devices and Does Not affect other Electronic Equipments. Necessary filtering precautions have been taken
- Four-digit changeable digital Pin Code and Mechanical Lock
- Automatic Failure Display Function on GLCD with continuous self checking of key parameters (BITE - Built In test Equipment)
- Reloading the factory default settings by one-touch button
- Easy Programming and Display via High Resolution GLCD (Graphical Liquid Crystal Display)
- 5 Menu Languages, Standard menu in English, German, Spanish, Turkish and Arabic
- Relay output for recording CCTV, Photo Recording, controlling turnstiles, etc.
- Built-in Uninterruptible Power Supply (UPS) enabling 2 hours operation without mains
- Battery ON/OFF Feature enabling Operation Without Mains
- Easy-to-mount and assemble walk through metal detector (15 Minutes) Male/Female Socket-Connector Design
- Manufactured for 7/24 Continuous Operation
- 74 cm Net Passage Width and 200 cm Net Passage Height
- Interference free Operation at Middle Level Sensitivity of 10 cm Distance Constant Metals and 200 cm distance Moving Metallic Objects
- Installation and Operation without interference between two detectors up to a distance of min. 5 cm
- Audio-Visual alarms are noticeable at a range of 4 meters
- Micro-Processor Settings do not change when there is an electricity cut-off
- No interference with Storage Media, Flash Memories, CD, Diskettes and other electronic devices
- All Electronic Units (electronic unit, power supply, battery, adapter etc..) are inside the Equipment. No external units.
- Corrosion Resistant Metal Footers for sturdy placement and durable use.
- Optional -SCADA Software-Controlled remote data communication and Networking of Multiple Metal Detectors; Software to Change settings by PC (Digital output for Network Connection)
- Optional REAL-TIME VIDEO PROSECUTION UNIT enabling recording of Alarmed Visitors Pictures/All Visitors pictures or video with Time-Stamp to SD Card ~30.000 Images
- Optional IRDA(Pilot) Remote Control Unit



Product Code: 869755498112
NATO STOCK NO (NSN): 6350270342876

Technical Features:

- Weight: 53 kg
- Gross weight: 65 kg
- Ambient Temperature: -20°C to +70°C
- Operating voltage: 70VAC – 270VAC / 50Hz - 60Hz
- Power: 10W Stand By- 20W (Alarm)
- Net : 740x580x2000
- External: 850x580x2200 mm
- Package Dimensions (W x H x L):**
- Box 1: 650 x 265 x 2285 mm. (52 kg)
- Box 2: 805 x 260 x 420 mm. (13 kg)

ECAC
COMPLIANCE

Detects all threat objects described in ECAC Doc.30 (European Civil Aviation Conference)

CERTIFIED SAFE

IEEE C95.6-2002
Human Exposure to
Electromagnetic Fields

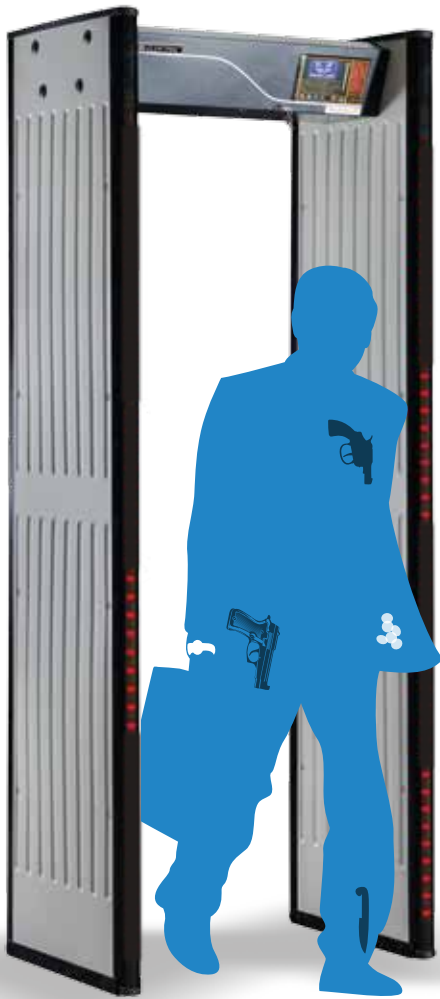
**Widely used by Ministry of Defense
at Military Premises, Police Premises,
Gendarme Forces and other Government Premises**



features...

- International norms (NILECJ-0601 L1-5/ NIJ 0601.02 Small Object Sensitivity 60529, EN 60068, EN60950 Class1 / IP44) In conformity with ECAC DOC 30 Standard 2, CE European Union Norms and produced under ISO 9001: 2008 QMS
- Certified in Compliance to EN 61000-6-3, EN 61000-6-1 regulations and in compliance with DIRECTIVE 2002/95/EC (restriction of the use of certain hazardous substances in electrical and electronic equipment)
- Multi-Zone - 15 Real Matrix Detection Zones(Up/Middle/Down and Left/Middle/Right)
- Separate Sensitivity Settings for Different Detection Zones
- Standard Preset JAILHOUSE / AIRPORT / MILITARY / POLICE PREMISES / SHOPPING MALL Security Levels
- Whilst Normal Operation, displays IN/OUT Counters and Security Level on 64x128 GLCD without abbreviations so that Security Staff can easily understand
- Capable to Detect both Ferrous and Non-Ferrous Metallic Threat Objects Considered Dangerous by International Security Authorities.
- Can detect when tested both individually and in combination.
- Displays Location of the Detected Metal Objects with Continuous LED Zone Indicators on Both Side Panels from top to bottom
- Detects all threat objects even concealed, hidden with camouflage and/or wrapped. Impossible for such threat objects to pass through the WTMD without causing an alarm.
- No Interferences between Zones and No False Alarms
- Random Alarm Feature enables to scan some percentage of clean people
- Homogeneous Magnetic Field – No Dead Points – Same Detection Capability from bottom to top
- Detects Metals regardless their orientation
- 20 sensitivity levels, 246 adjustable sensitivity steps at each, Preset NILECJ Sensitivity Program, - 7 Preset Programs
- Automatic Frequency Selection Feature
- Metal Density-Mass, Signal Strength Display at 10-level-VU meter with green, yellow, red LEDs easily allows sight from distance
- Superior Discrimination, Pin Point target location identification with Graphical zone display on Control Unit
- Auto Calibration (Automatically calibrates itself up to Environmental Conditions) No Set Up Changes necessary when relocated and/or new Magnetic Objects brought Near-By
- Human Health friendly Very Low Frequency VLF technology, No affects to Pace Makers, Pregnant and Magnetic Media
- Green/Red bicolor traffic through LEDs easily allows sight from distance 60 Persons/Minute and LED Alarm Indicators on side panels
- Record Statistics of Operation Duration, number of visitors and alarms
- Real Time Environmental Magnetic Noise Level Display
- 10 Adjustable audio tones with 10 volume levels (enabling Mute Operation) Adjustable Alarm Duration

- IR Protection Feature enabling perfect low false alarm operation/ Continuous Detection Mode Selection Enabled
- IP 44 Protection Level (EN 60529)
- Five Digit Incoming/ Outgoing & Alarm Counters (Visible/Invisible)
- Interference free Operation from other Electronic Devices and Does Not affect other Electronic Equipments. Necessary filtering precautions have been taken
- Four-digit changeable digital Pin Code and Mechanical Lock
- Automatic Failure Display Function on GLCD with continuous self checking of key parameters (BITE - Built In test Equipment)
- Reloading the factory default settings by one-touch button
- Easy Programming and Display via High Resolution GLCD (Graphical Liquid Crystal Display)
- Different Menu Languages, Standard menu in English, German, Spanish, Turkish and Arabic
- Relay output for recording CCTV, Photo Recording, controlling turnstiles, etc.
- Built-in Uninterruptible Power Supply (UPS) enabling 2 hours operation without mains
- Battery ON/OFF Feature enabling Operation Without Mains
- Easy-to-mount and assemble walk through metal detector (15 Minutes) Male/Female Socket-Connector Design
- Built for 7/24 Continuous Operation
- 74 cm Net Passage Width and 200 cm Net Passage Height
- Interference free Operation at Middle Level Sensitivity of 10 cm Distance Constant Metals and 200 cm distance Moving Metallic Objects
- Installation and Operation without interference between two detectors up to a distance of min. 5 cm
- Battery ON/OFF Feature to Enable Operation without mains
- Audio-Visual alarms are noticeable at a range of 4 meters
- Micro-Processor Settings do not change when there is an electricity cut-off
- No interference with Storage Media, Flash Memories, CD, Diskettes and other electronic devices
- Magnetic Field inside all passage area is 0.1 Gauss
- All Electronic Units (electronic unit, power supply, battery, adapter etc..) are inside the Equipment. No external units.
- Corrosion Resistant Metal Footers for sturdy placement and durable use.
- Operation Mode, Programming Parameters and Error Codes are Displayed on Wide 64x128 Characters GLCD Screen
- Optional -SCADA Software-Controlled remote data communication and Networking of Multiple Metal Detectors; Software to Change settings by PC (Digital output for Network Connection)
- Optional REAL-TIME VIDEO PROSECUTION UNIT enabling recording of Alarmed Visitors Pictures/All Visitors pictures or video with Time-Stamp to SD Card ~30.000 Images
- Optional IRDA(Pilot) Remote Control Unit
- Detection functions have been tested with ECAC/NIJ/TSA Test Kits and Certified



Product Code: 869755498132

Technical Features:

- Weight: 53 kg
- Gross weight: 65 kg
- Ambient Temperature: -20°C to +70°C
- Operating voltage:70VAC – 270VAC / 50Hz - 60Hz
- Power: 10W Stand By- 20W (Alarm)
- Net : 740x580x2000
- External: 850x580x2200 mm
- Package Dimensions (W x H x L):**
- Box 1: 650 x 265 x 2285 mm. (52 kg)
- Box 2: 805 x 260 x 420 mm. (13 kg)

**ECAC Compliant Airport
and Jailhouse Model**

**ECAC
COMPLIANCE**
Detects all threat objects
described in ECAC Doc.30
(European Civil Aviation Conference)

CERTIFIED SAFE
IEEE C95.6-2002
Human Exposure to
Electromagnetic Fields

ThruScan® Walk Through Metal Detector sX-i



features...

- International norms (NILECJ-0601 L1-5/ NIJ 0601.02 Small Object Sensitivity 60529, EN 60068, EN60950 Class1 / IP 65) In conformity with ECAC DOC 30 Standard 2, CE European Union Norms and produced under ISO 9001: 2008 QMS
- Certified in Compliance to EN 61000-6-3, EN 61000-6-1 regulations and in compliance with DIRECTIVE 2002/95/EC (restriction of the use of certain hazardous substances in electrical and electronic equipment)
- Multi-Zone - 9 Real Parallel Detection Zones
- Separate Sensitivity Settings for Different Detection Zones
- Standard Preset JAILHOUSE / AIRPORT / MILITARY / POLICE PREMISES / SHOPPING MALL Security Levels
- Whilst Normal Operation, displays IN/OUT Counters and Security Level on 64x128 GLCD without abbreviations so that Security Staff can easily understand
- Capable to Detect both Ferrous and Non-Ferrous Metallic Threat Objects Considered Dangerous by International Security Authorities.
- Can detect when tested both individually and in combination.
- Displays Location of the Detected Metal Objects with Continuous LED Zone Indicators on One Side Panel from top to bottom both rear and front of it. Side panels can be replaced
- Detects all threat objects even concealed, hidden with camouflage and/or wrapped. Impossible for such threat objects to pass through the WTMD without causing an alarm.
- No Interferences between Zones and No False Alarms
- Random Alarm Feature enables to scan some percentage of clean visitor
- Homogeneous Magnetic Field – No Dead Points – Same Detection Capability from bottom to top
- Detects Metals regardless their orientation
- 25 sensitivity levels, 246 adjustable sensitivity steps at each, Preset NILECJ Sensitivity Program, - 10 Preset Programs including ECAC STD1, ECAC STD2, ECAC STD3
- Automatic Frequency Selection Feature
- Metal Density-Mass, Signal Strength Display at 10-level-VU meter with green, yellow, red LEDs easily allows sight from distance
- Superior Discrimination, Pin Point target location identification with Graphical zone display on Control Unit
- Auto Calibration (Automatically calibrates itself up to Environmental Conditions) No Set Up Changes necessary when relocated and/or new Magnetic Objects brought Near-By
- Human Health friendly Very Low Frequency VLF technology, No affects to Pace Makers, Pregnant and Magnetic Media
- Green/Red bicolor traffic through LEDs easily allows sight from distance 60 Persons/Minute and LED Alarm Indicators on side panel
- Record Statistics of Operation Duration, number of visitors and alarms
- Real Time Environmental Magnetic Noise Level Graphical Display
- 10 Adjustable audio tones with 10 volume levels (enabling Mute Operation) Adjustable Alarm Duration
- IR Protection Feature enabling perfect low false alarm free operation/ Continuous Detection Mode Selection Enabled

- IP 65 Protection Level (EN 60529)
- Five Digit Incoming/ Outgoing & Alarm Counters (Visible/Invisible)
- Interference free Operation from other Electronic Devices and Does Not affect other Electronic Equipments. Necessary filtering precautions have been taken
- Four-digit changeable digital Pin Code and Mechanical Lock
- Automatic Failure Display Function on GLCD with continuous self checking of key parameters (BITE - Built In test Equipment)
- Reloading the factory default settings by one-touch button
- Easy Programming and Display via High Resolution GLCD (Graphical Liquid Crystal Display)
- Different Menu Languages, Standard menu in English, German, Spanish, Turkish and Arabic (Optional Russian, Hebrew and Japanese... etc.)
- Relay output for recording CCTV, Photo Recording, controlling turnstiles, etc.
- Built-in Uninterruptible Power Supply (UPS) enabling 2 hours operation without mains
- Battery ON/OFF Feature enabling Operation Without Mains
- Easy-to-mount and assemble walk through metal detector (15 Minutes) Male/Female Socket-Connector Design
- Built for 7/24 Continuous Operation
- 74 cm Net Passage Width and 200 cm Net Passage Height
- Interference free Operation at Middle Level Sensitivity of 10 cm Distance Constant Metals and 150 cm distance Moving Metallic Objects
- Installation and Operation without interference between two detectors up to a distance of min. 5 cm
- Battery ON/OFF Feature to Enable Operation without mains
- Audio-Visual alarms are noticeable at a range of 4 meters
- Micro-Processor Settings do not change when there is an electricity cut-off
- No interference with Storage Media, Flash Memories, CD, Diskettes and other electronic devices
- Magnetic Field inside all passage area is 0.1 Gauss
- All Electronic Units (electronic unit, power supply, battery, adapter etc..) are inside the Equipment. No external units.
- 8 cm Height Plastic Footers for sturdy placement and durable use.
- Operation Mode, Programming Parameters and Error Codes are Displayed on Wide 64x128 Characters GLCD Screen
- Records time and mass estimation of last 50 detected metals and accessible by GLCD
- Optional -SCADA Software-Controlled remote data communication and Networking of Multiple Metal Detectors; Software to Change settings by PC (Digital output RS422, RS232 or RS485)
- Optional REAL-TIME VIDEO PROSECUTION UNIT enabling recording of Alarmed Visitors Pictures/All Visitors pictures or video with Time-Stamp to SD Card ~30.000 Images
- Optional IRDA (Pilot) Remote Control Unit
- Detection functions have been tested with ECAC/NIJ/TSA Test Kits and Certified



Product Code: 869755498114
NATO STOCK NO (NSN): 6350270411812

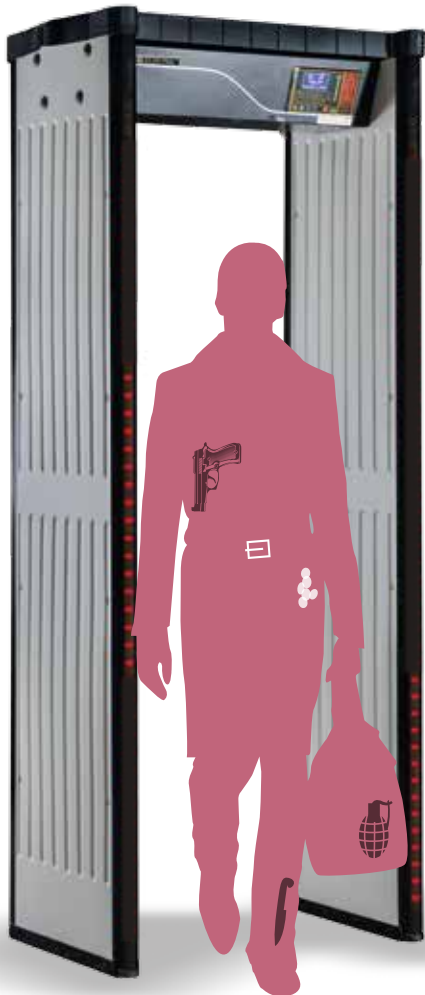
Technical Features:

- Weight: 49 kg
- Gross weight: 62 kg
- Ambient Temperature: -20°C to +70°C
- Operating voltage: 70VAC – 270VAC / 50Hz - 60Hz
- Power: 10W Stand By- 20W (Alarm)
- Net : 740x685x2000
- External: 850x685x2200 mm
- Package Dimensions (W x H x L):
- Box 1: 770 x 275 x 2300 mm. (49 kg)
- Box 2: 805 x 260 x 420 mm. (13 kg)

ECAC
COMPLIANCE
Detects all threat objects
described in ECAC Doc.30
(European Civil Aviation Conference)

CERTIFIED SAFE
IEEE C95.6-2002
Human Exposure to
Electromagnetic Fields

**ECAC Compliant Airport
and Jailhouse Model**



Product Code: 869755498113
NATO STOCK NO (NSN): 6350270374361

features...

- International norms (NILECJ-0601 L1-5/IP55/EN60950 Class1) In conformity with CE European Union Norms and produced under ISO 9001: 2008 QMS
- Certified in Compliance to EN 61000-6-3, EN 61000-6-1 regulations and in compliance with DIRECTIVE 2002/95/EC (restriction of the use of certain hazardous substances in electrical and electronic equipment)
- Multi-Zone - 9 Real Matrix Detection Zones(Up/Middle/Down and Left/Middle/Right)
- Separate Sensitivity Settings for Different Detection Zones
- Whilst Normal Operation, displays IN/OUT Counters and Security Level on LCD without abbreviations so that Security Staff can easily understand
- Capable to Detect both Ferrous and Non-Ferrous Metallic Threat Objects Considered Dangerous by International Security Authorities. Can detect when tested both individually and in combination.
- Displays Location of the Detected Metal Objects with Continuous LED Zone Indicators on Both Side Panels from top to bottom
- Detects all threat objects even concealed, hidden with camouflage and/or wrapped. Impossible for such threat objects to pass through the WTMD without causing an alarm.
- No Interferences between Zones and No False Alarms
- Homogeneous Magnetic Field – No Dead Points – Same Detection Capability from bottom to top
- Detects Metals regardless their orientation
- 20 sensitivity levels, 246 adjustable sensitivity steps at each, Preset NILECJ Sensitivity Program, - 7 Preset Programs
- Automatic Frequency Selection Feature
- Metal Density-Mass, Signal Strength Display at 10-level-VU meter with green, yellow, red LEDs easily allows sight from distance
- Superior Discrimination, Pin Point target location identification with Graphical zone display on Control Unit
- Auto Calibration (Automatically calibrates itself up to Environmental Conditions) No Set Up Changes necessary when relocated and/or new Magnetic Objects brought Near-By
- Human Health friendly Very Low Frequency VLF technology, No affects to Pace Makers, Pregnant and Magnetic Media
- Green/Red bicolor traffic through LEDs easily allows sight from distance 60 Persons/Minute and LED Alarm Indicators on side panels
- Operation Mode, Programming Parameters and Error Codes are Displayed on Wide 64x128 Characters GLCD Screen
- Real Time Environmental Magnetic Noise Level Display
- 10 Adjustable audio tones with 10 volume levels (enabling Mute Operation) Adjustable Alarm Duration
- IR Protection Feature enabling perfect low false alarm operation/ Continuous Detection Mode Selection Enabled
- IP 55 Protection Level (EN 60529)

- Five Digit Incoming/ Outgoing & Alarm Counters (Visible/Invisible)
- Interference free Operation from other Electronic Devices and Does Not affect other Electronic Equipments. Necessary filtering precautions have been taken
- Four-digit changeable digital Pin Code and Mechanical Lock
- Automatic Failure Display Function on GLCD with continuous self checking of key parameters (BITE - Built In test Equipment)
- Reloading the factory default settings by one-touch button
- Easy Programming and Display via High Resolution GLCD (Graphical Liquid Crystal Display)
- 5 Menu Languages, Standard menu in English, German, Spanish, Turkish and Arabic
- Relay output for recording CCTV, Photo Recording, controlling turnstiles, etc.
- Built-in Uninterruptible Power Supply (UPS) enabling 2 hours operation without mains
- Battery ON/OFF Feature enabling Operation Without Mains
- Easy-to-mount and assemble walk through metal detector (15 Minutes) Male/Female Socket-Connector Design
- Manufactured for 7/24 Continuous Operation
- 74 cm Net Passage Width and 200 cm Net Passage Height
- Interference free Operation at Middle Level Sensitivity of 10 cm Distance Constant Metals and 200 cm distance Moving Metallic Objects
- Installation and Operation without interference between two detectors up to a distance of min. 5 cm
- Audio-Visual alarms are noticeable at a range of 4 meters
- Micro-Processor Settings do not change when there is an electricity cut-off
- No interference with Storage Media, Flash Memories, CD, Diskettes and other electronic devices
- All Electronic Units (electronic unit, power supply, battery, adapter etc..) are inside the Equipment. No external units.
- Corrosion Resistant Metal Footers for sturdy placement and durable use.
- ABS Rain Shelter on top
- Optional: ABS Protective footers for increased protection and strong fixing
- Optional: Low voltage main supply
- Optional -SCADA Software-Controlled remote data communication and Networking of Multiple Metal Detectors; Software to Change settings by PC (Digital output for Network Connection)
- Optional REAL-TIME VIDEO PROSECUTION UNIT enabling recording of Alarmed Visitors Pictures/All Visitors pictures or video with Time-Stamp to SD Card ~30.000 Images
- Optional IRDA(Pilot) Remote Control Unit

Technical Features:

- Weight: 57 kg
- Gross weight: 68 kg (3 boxes)
- Ambient Temperature: -20°C to +70°C
- Operating voltage:70VAC – 270VAC / 50Hz - 60Hz
- Power: 10W Stand By- 20W (Alarm)

Dimensions

Net : 740x580x2000

External: 850x580x2200 mm

Package Dimensions (W x H x L):

Box 1: 650 x 265 x 2285 mm. (52 kg)

Box 2: 805 x 260 x 420 mm. (12 kg)

Box 3: 620 x 120 x 1010 mm. (4 kg)

ECAC
COMPLIANCE

Detects all threat objects described in ECAC Doc.30 (European Civil Aviation Conference)

CERTIFIED SAFE

IEEE C95.6-2002
Human Exposure to
Electromagnetic Fields

**Widely used by Ministry of Defense at Military Premises,
Police Premises, Gendarme Forces and other Government Premises**

ThruScan® Walk Through Metal Detector real time video prosecution unit

**Military Premises,
Police Premises,
jailhouses,
Airports,
Universities,
Consulates**

**Captures the last 30.000 visitors images with time stamp (date-hour-minute)
and automatically records**

With this optional module, you may capture images of all visitors or only alarmed visitors can be captured either in Picture format or Video Format.



features...

General Characteristics

Video Output	: NTSC/PAL TV Out
Image	: JPEG 800x600
Video	: AVI 5fps 320x240
Image Size	: ~80KB (HQ) ~40KB(SQ) (depends on image)
Video Size	: ~600KB MPEG, QVGA (320x240), 5fps
Multicapture	: 10 images per shot
Capturing	: Capturing with Alarm or Motion Detect Activation
Memory Size	: Max. 2GB SD Card supported. Unless SD Card is not on it. it can store in its memory for a few images. Maximum 1024 folders and for each folder 1024 images can be stored.



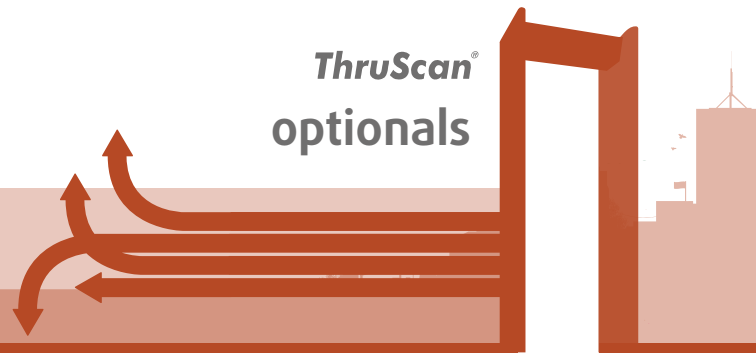
System Features

- View Mode and Playback Modes
- Different Video Channels and PIP (Picture in Picture) Features
- Image Capture
 - Alarm Activated
 - Motion detect
 - Manual Image Capture
- Automatic Recording
- Availability of Archiving, Moving, Deleting and Viewing Previously Captured Images and Video Files
- Video Capture Length & Speed Selection Controls
- Time Stamp Feature
- Image Quality Settings
- Video Quality Settings
- Among other Superiorities...

Available with ThruScan/sX, s15-i
and sX-i models.

Product Code: 869755498191

*TV Monitor is not included in the Package



NILECJ TEST KIT



NILECJ Test Pieces Bag, American National Law Enforcement and Justice norms to test Walk-Through Metal Detectors. Consists of different size Metal Objects simulating Guns, Smaller Threat Objects to be detected and some Everyday use Metal Belongings considered not dangerous which the WTMDs should not Give alarm at Certain Sensitivity Levels.

Product Code: 869755498919

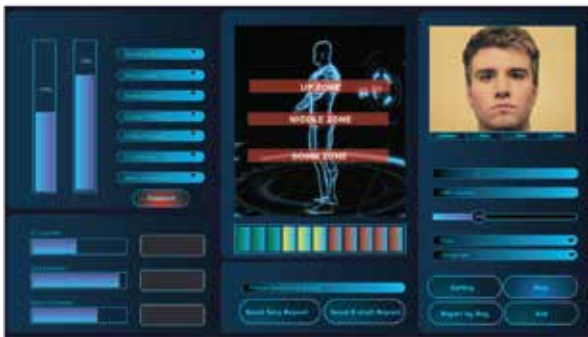
REAL TIME VIDEO PROSECUTION UNIT



This Special Package consists of the DVR System Embedded to the WTMD Main Board, the Camera Assembly, Camera and the SD Card Storage Media as well as the TC Out Video Connection Sockets. Alarmed visitors images/video are automatically captured with a time-stamp and saved in 2 GB SD Card up to ~30.000 images. System allows recording of All Visitors/Alarmed Visitors Only with a time-stamp and queue number. This package is only available with sX, s15-i and sX-i models. Ultimate feature FACE RECOGNITION can be embedded

Product Code: 869755498191

SRC – SCADA REMOTE CONTROL SOFTWARE SET



SRC Scada Telemetry Program enabling 100 m cable connection to a remote PC and possibility to Network up to 99 WTMDs via one PC. REAL TIME Monitoring of Alarms, Changes with the Settings and Statistical Data Recording is available. Communication interface is RS232/RS485. For fast Access to settings and Safe Screening of Prisoners at some Airports and Jailhouses this program is in use. Some Shopping Malls prefer to use this system for the Statistical Records. Available for sX, s15-i, sX-i, sX-WP and Operating in real time and provides detailed reports. Ultimate feature FACE RECOGNITION can be embedded. More basic program available for s3, s6, s9 models.

Detectors can be connected to network via Ethernet and can be remote controlled by IP Protocol

Product Code: 869755498194

IRDA – PILOT REMOTE CONTROL UNIT



IRDA Remote Control Unit for remote settings of the WTMDs (password protected). Ergonomically designed Pilot Remote Operates with two AAA Batteries. The same Remote can be used with the Real-Time Video Prosecution Unit with a different password entry. Available with sX, s15-i, sX-i and sX-WP models.

Product Code: 869755498195

ABS RAIN SHELTER



ABS Rain Shelter provides increased protection for temporary outdoor use except the outdoor model ThruScan/SX WP. Safe drainage of Rain Water from single chute. Cable entry holes on top for mains supply. Available with all ThruScan Metal Detectors.

Product Code: 869755498196

EXTRA BATTERY GROUP



Extra Battery Pack for longer time out operation against electricity cut Offs and/or the use of WTMDs whereby there is no electricity. (Provides 4-8-12 hours of operation on demand) High level of protection enabling Outdoor Use.

Product Code: 869755498954

ThruScan® optionals

LED ZONE INDICATORS ON BOTH SIDES (BACK/FRONT)



LED zone indicators at the back of the detector can also be put at the front face. In this case, a security guard can notice alarms from behind the device also. People waiting in screening queue can also see where the detected metals are on the persons in the passage. Available with sX, s15-i, sX-i and sX-WP models.

Product Code: 869755498955

OBJECT SLIDING TABLE



Object Sliding Table is a Must Have product for professional Security Checkpoint Concealed Weapons Detection applications. It is made of rugged water resistant ABS material used for WTMDs and its special design sliding part on top provides ease of use and offers comfort for visitors.

Technical Specifications: Made of 4 mm ABS Plastic, approx 780 x 500 x 350 mm
80 mm sliding top depth

Available with all WTMD Models.

Product Code: 869755498192

WHEELED TRANSPORTATION ACCESSORY



WTMD Wheeler is used for the transportation of the Assembled WTMD Units on flat surfaces. This simplified transportation ease allows the transportation of the unit by 1 (one) person and provides mobility to WTMDs when required.

Available with all WTMD Models.

Product Code: 869755498198

CARRY BAG



Provides ease of Transportation of the Unassembled WTMD Units on Installation areas or where special mobility requirements occur. This accessory is designed to meet the demanding Security Industry expert's expectations. It is made of Water Resistant outer surface. Available with all WTMD Models.

Product Code: 900000000194

QUEUE BARRIER



Chrome plated, 90 cm height, weights approx. 9 kg, 2.5 m length and 48 mm thick red ribbon with yellow ThruScan logo print. 76 mm Pole diameter with inbuilt automatic winding mechanism. Quadruple ribbon fixing joints enabling versatile usage. Steady stand with carved design flange.

Product Code: 900000000193

SHOE METAL DETECTOR



Product Code: 869755498193

Easy to Operate New Security Solution for Airports, Railroad Stations, Prisons, Stadiums and any other high security venues such as Concert Halls, Office Buildings and more.

- ShoeScan is Fast, automatic and Easy to Operate
- ShoeScan detects threats reliably without the need to remove shoes
- Very High Throughput Rate of 60 Person/Minute
- ShoeScan Detects all Metals both ferrous and non-ferrous
- Any Metal Amount above threshold values will cause an Audio-Visual Alarm with Bright Red LEDs on the Equipment.
- Adjustable Sensitivity
- ShoeScan is able to detect full range of object sizes starting with objects such as Cardboard Knife, Guns, Gun Parts and possible bigger Metal Threats
- Space Saving Compact Design Portable Detector for Standard Checkpoint Security Control Procedures
- Built-In Battery Back-Up Feature against Electricity Cut Off

VEHICLE INSPECTION MIRROR

- Easy to use ergonomic crutch handle
- Aluminum Extension (3 Levels)
- 30 cm diameter Convex Mirror
- Spherical Wheel
- Flashlight Assembly for Illumination



Product Code: 869755498197

ThruScan® dX-X



Designed to detect weapons, knives and other metallic threat objects made of magnetic and non-magnetic metals carried on people.

International Norms (NILECJ-0602.02 L1-5/IP53/EN60950 Class1), In Conformity to CE and in Compliance with EN61000-6-3, EN61000-6-1 being produced under ISO 9001:2008 QMS. Conformity to ECAC(European Civil Aviation Conference) (Doc. 30) Latest Standards (TS 2418 EN 61010-1) Safety requirements for electrical equipment for measurement, control, and laboratory use (EN 61000-6.3) Emission standard for residential, commercial and light-industrial environments (EN 61000-6.2) Immunity for industrial environments, Compliance with IEEE C 95.1 IEEE Standard for Safety Levels with Respect to Human Exposure to Radio Frequency Electromagnetic Fields, 3 kHz to 300 GHz Standard as per its Operation Frequency Limits

- Peculiar Elinno Design
- Can detect all ferromagnetic, paramagnetic and diamagnetic metals. Does not give alarm to human body when magnetic/non magnetic or metals and/or alloys not carried
- Auto Calibration (Automatically Calibrates itself to environment)
- Human Health friendly Very Low Frequency VLF technology, No affects to Pace Makers, Pregnant and Magnetic Media (Certified)
- 40 hrs Operation at 10% Alarm Ratio and 50 hrs Operation on Stand By with a single charge
- Complete Set with 9 V NiMH Rechargeable Battery, 220 V AC Charger, Belt Holder and Wrist Stripe
- Alarm Indication Modes can be; Visual LED Indication, Audio-Visual Indication and Vibration (Optional) • Earphone can be used for Silent Operation Mode. Earphone socket is a Standard Supply and the Earphone itself is Optional. Audio Alarms can be heard from earphone when used.
- 5 Level LED Vu-Meter Audio-Visual Alarm indications
- Sensitivity Adjustment with Visual LED Vu-Meter Display. When in operation, touch button membrane keys (Up/Down) are used to increase and decrease the sensitivity (1st LED lowest sensitivity, 5th LED highest sensitivity).
- Very low consumption Stand-By 4 mA, max 13 mA at alarm.
- Certified Safe for wearers of pace makers, Pregnant Women and Magnetic Storage Media
- No false alarms caused by another Hand-Held Metal Detectors in operation min. 1 m distance Efficient control at heel level searches, no interference from rebar inside concrete floor. Considering the reference detection surfaces, there will be no sound or light alarm for caused by the rebar at a height of 30cm.
- The dX-X does not give alarm for (1m±0,1m)x(1m±0,1m) size 0,75mm±0,13mm thick iron sheets at a distance of 50cm

Test Object

Test Object	Minimum Detection Distance
9 mm MKE Pistol	35 cm
AM 7 (NILECJ Metal)	27 cm
AN 7 (NILECJ Metal)	25 cm
2 EUR Coin	18 cm
Paper Blade (2x13 cm)	17 cm
9 mm Bullet (rifle)	15 cm
Razor	7 cm
Needle/Pin	5 cm

Minimum Detection Distance

- Audio Alarm Tone change as per the distance of the detected objects
- Produced with SMD Technology.
- Made of impact resistant robust ABS Material against drop and crashes
- Perfectly operates between -20°C and +70 °C at 95% non-condensed humidity
- Audio-Visual Low Battery Indication, 5 Level LED Vu-Meter Battery Level Display with Audio Indication. Battery can be changed by opening the battery compartment only. Battery can be charged easily without removing the battery using the charge adapter.
- Protective circuitry design against reverse connection of the battery.
- Battery can be replaced easily without using any tools.
- The HHMD has an ergonomic design enabling continuous use and easy handling with one hand only.
- Two detectors set to operate at maximum sensitivity levels does not interfere with each other at a distance of 50 cm
- Does not interfere with DECT phones, mobile phones, etc. devices
- Each equipment, has written Brand/Model Name and Serial Nr. information on it
- Each equipment is being provided with a Brochure, Warranty Card and User's Manual
- 2 Years Warranty and 10 Years Parts Supply Availability as per our "General Conditions of sales, Delivery & Warranty"

Technical Features:

• Weight	: ~ 420 gr.
• Gross Weight	: ~ 450 gr.
• Operation Voltage	: 9V – Alkaline or Ni-Mh Battery
• Current	: 4 mA Stand By- 13 mA Alarm
• Dimensions (H x W x L)	: 43 mm x 83 mm x 410 mm
• Operation Temperature	: -20°C - +70°C 95% non-condensed humidity
• Storage Temperature	: -30°C - +75°C

Optional Accessories:

- Vibration
- Spare Battery
- Earphone
- Customized Labeling
- Carry Bag
- Special Design enabling Interference free operation from Radio Frequency



CERTIFIED SAFE

IEEE C95.6-2002
Human Exposure to
Electromagnetic Fields

ThruScan® dX



(NSN/Nato Stock Number: 6665270414330 NCAE: T7012)
Product Code: 869755498122

Alarm : Audio (Earphone-Vibration Optional) Visual (5 Level LED Vu-Meter)
 Battery : 1 pcs 9V Ni-Mh 250 mAh (rechargeable and replaceable)
 Charge Period : First Charge ~15 hrs latter charges 10 hrs.
 Charger : Mains: 220V AC 50Hz - 12V DC 110mA
 Current : Stand by 5 mA, Alarm ~15 mA
 Battery Voltage Test : Battery Level Display on 5 Level LED Vu-Meter Display at Start Up.
 Uptime : Audio-Visual Low Battery Indication for below threshold operation levels.
 : 40 hrs Operation at 10% Alarm Ratio and 50 hrs Operation on Stand By with a single charge
 Weight : ~420 g
 Dimensions : 43 x 83 x 410 mm
 Operation Temperature : -20°C / + 70 °C (Can be improved on demand)
 Storage Temperature : -30°C / + 75 °C
 Material : ABS
 Standards : CE Compliance, EN61000-6-3, EN61000-6-1 (TS 2418 EN 61010-1)
 Warranty : 2 Years (10 Years Parts Supply Availability) as per our "General Conditions of Sales, Delivery & Warranty"
 Operation : Search Button Activation.
 Sensitivity Adjustment : When in Operation touch button membrane keys (Up/Down) are used to increase and decrease the sensitivity (1st LED lowest sensitivity, 5th LED highest sensitivity).

Test Object	Min.
9 mm MKE Pistol	17 cm
AM 7 (NILECJ Metal)	13 cm
AN 7 (NILECJ Metal)	12 cm
Paper Blade (2x13 cm)	10 cm
2 EUR Coin	9 cm
9 mm Bullet (rifle)	7 cm
Needle/Pin	2 cm

ThruScan®



Product Code: 869755498128

Alarm : Audio (Earphone-Vibration Optional) Visual LED indication
 Battery : 1 pcs 9V Ni-Mh 250 mAh (rechargeable and replaceable)
 Charge Period : First Charge ~15 hrs latter charges 10 hrs.
 Charger : Mains: 220V AC 50Hz - 12V DC 110mA
 Current : Stand by 3 mA
 Battery Voltage Test : Audio-Visual Low Battery Indication for threshold operation levels.
 Weight : ~420 g
 Dimensions : 43 x 83 x 410 mm
 Operation Temperature : -20°C / + 70 °C
 Storage Temperature : -30°C / + 75 °C
 Material : ABS
 Warranty : 2 Years (10 Years Parts Supply Availability) as per our "General Conditions of Sales, Delivery & Warranty"
 Operation : On/Off switch operation.

Test Object	Min.
Pistol Browning 14	17 cm
Pistol C2 Model 75B	15 cm
Paper Blade (18x100 mm)	6 cm
Copper Tube(6cm)	5 cm
9 mm Bullet(Pistol)	5 cm
Razor Blade	5 cm
Cable(2x1.5mm ² -30cm)	3 cm

Manufactured in compliance with
ECAC
Criteria

TSE
Safety and EMC Tests
CERTIFIED SAFE
IEEE C95.1-2005
Human Exposure to
Electromagnetic Fields

Note: Special design to prevent false alarm from walkie talkies (radio frequencies)

ThruSec®



Product Code: 90000000122

Alarm : Audio, Vibration (Earphone Optional) Visual LED indication
 Green LED indicates operation and red LED alarm - yellow LED Low Battery
 Battery : 1 pcs 9V Ni-Mh 250 mAh (rechargeable and replaceable) Optional
 Charge Period : First Charge ~15 hrs latter charges 10 hrs.
 Charger : Mains: 220V AC 50Hz - 12V DC 110mA
 Current : Stand by 11 mA
 Weight : ~375 g
 Dimensions : 43 x 85 x 415 mm
 Operation Temperature : -10°C / + 45 °C
 Storage Temperature : -20°C / + 55 °C
 Material : ABS
 Warranty : 1 Year (7 Years Parts Supply Availability) as per our "General Conditions of Sales, Delivery & Warranty"
 Operation : On/Off switch operation.



Izmir Ataturk Industrial Zone
M.K. Ataturk Blv. 23-25 Cigli, 35620 Izmir / Turkiye
Tel:+90 232 376 7300 Fax: +90 232 376 7030 E-mail: elektral@elektral.com.tr
www.elektral.com.tr